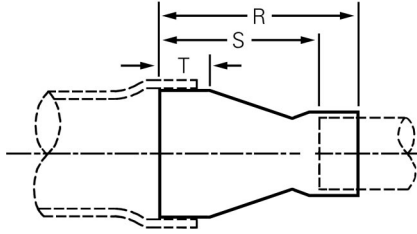


Copper-Nickel Belled End Fittings

Concentric Street Reducers - NAVSEA 802-5959353 App.B, MSS SP-119



- UNS Designation Numbers: 90-10 (UNS C70600) and 70-30 (UNS C71500).
- Nominal Chemicals 90-10: Copper 88.6%, Nickel 10.0%, Iron 1.4%.
- Nominal Chemicals 70-30: Copper 69.5%, Nickel 30.0%, Iron 0.5%.

Nominal Pipe Size	OD	Minimum Wall	T Tangent	NAVSEA			MSS SP-119			NAVSEA		MSS SP-119	
				R	S	Weight	R	S	Weight	90-10 Part Number	70-30 Part Number	90-10 Part Number	70-30 Part Number
3/8 x 1/4	.675 x .540	.065	.38	1.59	1.28	.11	1.84	1.52	.12	471714	482197	591289	591297
1/2 x 1/4	.840 x .540	.065	.44	1.75	1.44	.12	1.90	1.58	.13	470556	482202	591310	591328
1/2 x 3/8	.840 x .675	.065	.44	1.75	1.44	.12	1.90	1.58	.13	480331	482210	591336	591344
3/4 x 1/4	1.05 x .540	.065	.47	1.81	1.50	.13	1.90	1.58	.14	481832	482228	591360	591378
3/4 x 3/8	1.05 x .675	.065	.47	1.81	1.50	.13	1.90	1.58	.14	481840	482236	591394	591409
3/4 x 1/2	1.05 x .840	.065	.47	1.81	1.50	.13	1.90	1.58	.14	481858	482244	563993	591425
1 x 1/4	1.315 x .540	.065	.5	2.28	1.96	.22	2.60	2.28	.25	481866	482252	591433	591441
1 x 3/8	1.315 x .675	.065	.5	2.28	1.96	.22	2.60	2.28	.25	481971	482260	591459	591467
1 x 1/2	1.315 x .840	.065	.5	2.28	1.96	.22	2.60	2.28	.25	481989	482278	591475	591483
1 x 3/4	1.315 x 1.05	.065	.5	2.28	1.96	.22	2.60	2.28	.25	482008	482286	564004	591491
1 1/4 x 1/4	1.66 x .540	.072	.56	2.31	2.00	.3	2.75	2.43	.35	482016	482294	591506	591514
1 1/4 x 3/8	1.66 x .675	.072	.56	2.31	2.00	.3	2.75	2.43	.35	482032	482309	591522	591530
1 1/4 x 1/2	1.66 x .840	.072	.56	2.31	2.00	.3	2.75	2.43	.35	482040	482317	587418	591548
1 1/4 x 3/4	1.66 x 1.05	.072	.56	2.31	2.00	.3	2.75	2.43	.35	482058	482325	591556	497728
1 1/4 x 1	1.66 x 1.315	.072	.56	2.31	1.94	.3	2.75	2.37	.35	482066	482333	564012	591564
1 1/2 x 1/4	1.90 x .540	.072	.69	2.94	2.62	.4	3.37	3.05	.5	470564	482341	591611	591629
1 1/2 x 3/8	1.90 x .675	.072	.69	2.94	2.62	.4	3.37	3.05	.5	482074	482359	591637	591645
1 1/2 x 1/2	1.90 x .840	.072	.69	2.94	2.62	.4	3.37	3.05	.5	474495	482367	564020	591653
1 1/2 x 3/4	1.90 x 1.05	.072	.69	2.94	2.62	.4	3.37	3.05	.5	482082	482375	564038	591661
1 1/2 x 1	1.90 x 1.315	.072	.69	2.94	2.56	.4	3.37	3.00	.5	482090	482383	494615	591679
1 1/2 x 1 1/4	1.90 x 1.66	.072	.69	2.94	2.50	.4	3.37	2.93	.5	482105	482391	564046	591687
2 x 1/2	2.375 x .840	.083	.72	3.44	3.12	.7	3.84	3.52	.8	482113	482406	587492	591700
2 x 3/4	2.375 x 1.05	.083	.72	3.44	3.12	.7	3.84	3.52	.8	482121	482414	564054	591718
2 x 1	2.375 x 1.315	.083	.72	3.44	3.06	.7	3.84	3.46	.8	470328	482422	564062	591815
2 x 1 1/4	2.375 x 1.66	.083	.72	3.44	3.00	.7	3.84	3.40	.8	476934	482430	564070	591823
2 x 1 1/2	2.375 x 1.90	.083	.72	3.44	2.88	.7	3.84	3.28	.8	470336	481874	561771	508286
2 1/2 x 1*	2.875 x 1.315	.083	.88	3.91	3.49	.95	4.53	4.15	1.1	584672	591849	591857	505995
2 1/2 x 1 1/4	2.875 x 1.66	.083	.88	3.91	3.47	.95	4.53	4.09	1.1	470344	481882	564088	591865
2 1/2 x 1 1/2	2.875 x 1.90	.083	.88	3.91	3.34	.95	4.53	3.97	1.1	467480	474500	502426	508278
2 1/2 x 2	2.875 x 2.375	.083	.88	3.91	3.34	.95	4.53	3.97	1.1	470352	481890	494796	507094

Dimension R is end to end of fitting. Dimension S is end of fitting to end of adjoining pipe. Dimension T is the tangent length of the street end. Dimensions are in inches. Sizes not shown may be available upon request.

*These sizes not included in NAVSEA/MSS, dimensions per Alaskan standards. Dimensions for all other sizes qualify for both NAVSEA/MSS.