

Copper-Nickel Flanges

Solid Forged Copper Nickel Flanges, Classes 150, 200, 300 and 400.

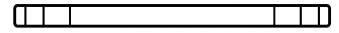
Special Order Flanges



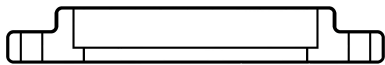
Slip-On
ANSI B16.5
NAVSEA 810-4715319
AWWA Large Diameter



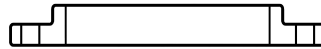
Weld Neck
NAVSEA 810-1385992
ANSI B16.5
MIL-F-20670



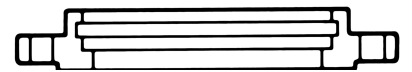
Blind
ANSI B16.5
Plate Flanges
(Dimensions to your sketch)



Socket Weld
ANSI B16.5
NAVSEA 810-4715319-Butterfly Type (2c)
MIL-F-20042



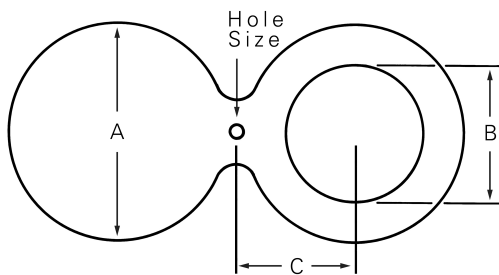
Threaded
ANSI B16.5
ANSI B16.24



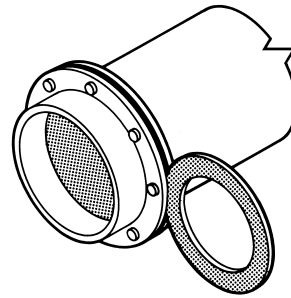
Silver-Brazing
NAVSEA 810-1385947
MIL-F-20042
Face Fed or Grooved for Ring

Note: ANSI B16.5 Flanges Can be Ordered as Raised or Flat Faced.

Spectacle Blind Flange



Spectacle Blind



Spectacle Blind Bolted In

Nominal Pipe Size	2 1/2	3	4	6	8	10	12
A (OD)	4 5/8	5 1/8	6 5/8	8 1/2	10 3/4	13 1/8	15 7/8
B (ID)	Bore made to required specifications						
W	1	1	1	1	1 1/2	1 1/2	1 1/2
C	2 3/4	3	3 3/4	4 3/4	5 7/8	7 1/8	8 1/2
Hole Size	3/4	3/4	3/4	7/8	7/8	1	1