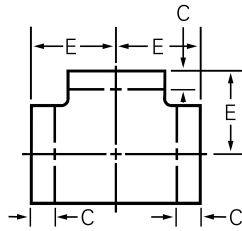
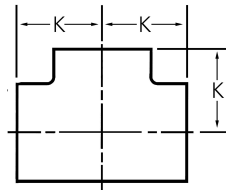


Copper-Nickel Butt Welding Fittings

Straight Tees - NAVSEA 810-1385880, Revision D



NAVSEA



ANSI B16.9

- UNS Designation Numbers: 90-10 (UNS C70600) and 70-30 (UNS C71500).
- Nominal Chemicals 90-10: Copper 88.6%, Nickel 10.0%, Iron 1.4%.
- Nominal Chemicals 70-30: Copper 69.5%, Nickel 30.0%, Iron 0.5%.

Nominal Pipe Size	OD	Dimensions			Class 200		Class 50		90-10 Part Number	70-30 Part Number
		E	C (Min)	K*	Nominal Wall	Weight	Nominal Wall	Weight		
1/4	.540	11/16	9/32		.065	.03			413415	478025
3/8	.675	29/32	3/8		.065	.05			413423	478033
1/2	.840	1 3/32	7/16	1	.065	.1			413431	478059
3/4	1.05	1 1/4	15/32	1 1/8	.065	.2			413449	478075
1	1.315	1 1/2	1/2	1 1/2	.065	.3			127543	478091
1 1/4	1.660	1 7/8	9/16	1 7/8	.072	.4			127577	478114
1 1/2	1.900	2 1/4	11/16	2 1/4	.072	.6			127585	236245
2	2.375	2 1/2	23/32	2 1/2	.083	1			127624	127658
2 1/2	2.875	3	7/8	3	.083	2			127747	127860
3	3.500	3 3/8	29/32	3 3/8	.095	3			127828	127844
3 1/2	4.000	3 3/4	15/16	3 3/4	.095	4			128028	259421
4	4.500	4 1/8	31/32	4 1/8	.109	5			128109	230998
5	5.563	4 7/8	1 3/32	4 7/8	.125	8			128248	128484
6	6.625	5 5/8	1 11/64	5 5/8	.134	11			132637	231009
8	8.625	7	1 3/8	7	.148	22			128264	111657
10	10.75	8 1/2	1 9/16	8 1/2	.187	46			128280	111681
12	12.75	10	1 11/16	10	.250	83			128303	437207
14	14.00	11	1/2	11	.250	88			128329	478130
16	16.00	12	1/2	12	.250	112			431926	478156
18	18.00	13 1/2	1/2	13 1/2	.250	140				
20	20.00	15	1/2	15	.250	165				
22	22.00	16 1/2	1/2	16 1/2	.250	182				
24	24.00	17	1/2	17	.250	222				
30	30.00	22	1/2	22	.250	277			562337	
36	36.00	26 1/2	1/2	26 1/2	.250	333				

Dimensions are in inches. All weights are approximate.

Specifications: pg. 60. Tolerances: pg. 58.

* ANSI B16.9 dimensions. For sizes 26" and larger, outlet dimension "K" is recommended, but not mandatory.

Sizes not shown may be available upon request.

Available in "regular" thickness (similar to Schedule 40s).