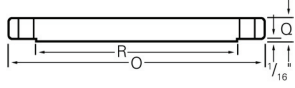


ANSI Stainless Steel Flanges, Class 300 continued



Blind

Nominal Pipe Size	O	Q	R	Bolt Holes	Bolt Circle	Weight	304L R/F Part Number	316L R/F Part Number
3/4	4 5/8	5/8	1 11/16	4 - 3/4	3 1/4	3	172687	174524
1 1/4	5 1/4	3/4	2 1/2	4 - 3/4	3 7/8	6	172718	174566
1 1/2	6 1/8	13/16	2 7/8	4 - 7/8	4 1/2	7		174582
2	6 1/2	7/8	3 5/8	8 - 3/4	5	8		509753
5	11	1 3/8	7 5/16	8 - 7/8	9 1/4	37	172823	174689
6	12 1/2	1 7/16	8 1/2	12 - 7/8	10 5/8	48	172831	174702
10	17 1/2	1 7/8	12 3/4	16 - 1 1/8	15 1/4	120	172873	
12	20 1/2	2	15	16 - 1 1/4	17 3/4	183	172899	241648
14								
16								
18								
20								
24								

Dimensions are in inches. All weights are approximate.
 Sizes not shown may be available upon request.