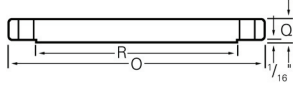


Stainless Steel Flanges

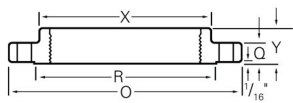
ANSI Stainless Steel Flanges, Class 150 continued



Blind

Nominal Pipe Size	O	Q	R	Bolt Holes	Bolt Circle	Weight	304L R/F Part Number	304L F/F Part Number	316L R/F Part Number
1/2	3 1/2	7/16	1 3/8	4 - 5/8	2 3/8	2	170546		171071
3/4	3 7/8	1/2	1 11/16	4 - 5/8	2 3/4	2	170562		171089
1	4 1/4	9/16	2	4 - 5/8	3 1/8	2	170588		171097
1 1/4	4 5/8	5/8	2 1/2	4 - 5/8	3 1/2	3	170601		171110
1 1/2	5	11/16	2 7/8	4 - 5/8	3 7/8	3	170627		171136
2	6	3/4	3 5/8	4 - 3/4	4 3/4	4	170643		171152
2 1/2	7	7/8	4 1/8	4 - 3/4	5 1/2	7	170685		171194
3	7 1/2	15/16	5	4 - 3/4	6	9	170669		171178
3 1/2	8 1/2	15/16	5 1/2	8 - 3/4	7	13			
4	9	15/16	6 3/16	8 - 3/4	7 1/2	17	170708	559936	171217
5	10	15/16	7 5/16	8 - 7/8	8 1/2	20	170724		
6	11	1	8 1/2	8 - 7/8	9 1/2	27	170740		171259
8	13 1/2	1 1/8	10 5/8	8 - 7/8	11 3/4	47	170766		171275
10	16	1 3/16	12 3/4	12 - 1	14 1/4	67	170782		171283
12	19	1 1/4	15	12 - 1	17	123	170805		171291
14	21	1 3/8	16 1/4	12 - 1 1/8	18 3/4	139	477281		490946
16	23 1/2	1 7/16	18 1/2	16 - 1 1/8	21 1/4	187	490954		473041
18	25	1 9/16	21	16 - 1 1/4	22 3/4	217	490962		490970
20	27 1/2	1 11/16	23	20 - 1 1/4	25	283	490988		490996
24	32	1 7/8	27 1/4	20 - 1 3/8	29 1/2	415	491007		491015

Threaded



Nominal Pipe Size	O	Q	R	X	Bolt Holes	Bolt Circle	Y	Weight	304L R/F Part Number	316L R/F Part Number
1/2	3 1/2	7/16	1 3/8	1 3/16	4 - 5/8	2 3/8	5/8	1	407472	468648
3/4	3 7/8	1/2	1 11/16	1 1/2	4 - 5/8	2 3/4	5/8	2	467016	468656
1	4 1/4	9/16	2	1 15/16	4 - 5/8	3 1/8	11/16	2	467024	468664
1 1/4	4 5/8	5/8	2 1/2	2 5/16	4 - 5/8	3 1/2	13/16	3	438520	468672
1 1/2	5	11/16	2 7/8	2 9/16	4 - 5/8	3 7/8	7/8	3	438368	467040
2	6	3/4	3 5/8	3 1/16	4 - 3/4	4 3/4	1	5	467032	412257
2 1/2	7	7/8	4 1/8	3 9/16	4 - 3/4	5 1/2	1 1/8	8		472809
3	7 1/2	15/16	5	4 1/4	4 - 3/4	6	1 3/16	10		472817
4	9	15/16	6 3/16	5 5/16	8 - 3/4	7 1/2	1 5/16	13		503189

Dimensions are in inches. All weights are approximate.
 Sizes not shown may be available upon request.