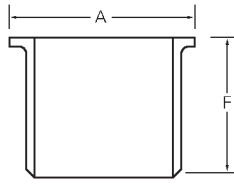


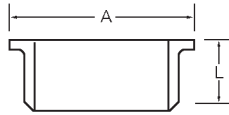
Stainless Steel Stub Ends

Stub Ends

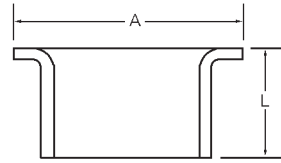
ANSI Type A



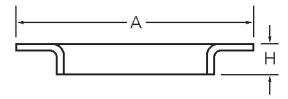
MSS Type A



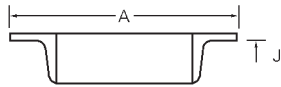
SK-3



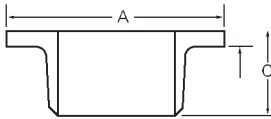
SK-2



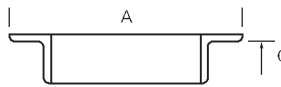
SK-38



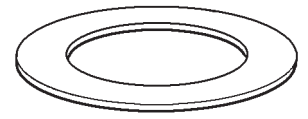
SK-722



SK-36



SK-1 Ring



■ Also available in OD and ID sizes.

Size	Stub End Lap Diameter A	ANSI F	SK-3 (MSS) L	SK-38 J	SK-2 H	SK-722 C	SK-36 C
1/2	1 3/8	3	2				
3/4	1 11/16	3	2				
1	2	4	2				
1 1/4	2 1/2	4	2				
1 1/2	2 7/8	4	2	1 1/4	5/8		
2	3 5/8	6	2 1/2	1 1/4	5/8	2 1/2	
2 1/2	4 1/8	6	2 1/2	1 1/4	3/4	2 1/2	
3	5	6	2 1/2	1 1/4	3/4	2 5/8	3/4
4	6 3/16	6	3	1 1/4	3/4	3	3/4
5	7 5/16	8	3	1 3/8	3/4	3	
6	8 1/2	8	3 1/2	1 3/8	3/4	3	1
8	10 5/8	8	4	1 1/2	3/4	3 1/2	1
10	12 3/4	10	5	1 5/8	7/8	6	1
12	15	10	6	1 5/8	7/8	6	1 1/2
14	16 1/4	12	6	1 3/4	7/8		1 1/2
16	18 1/2	12	6	1 3/4	7/8		1 1/2
18	21	12	6	2	7/8		1 1/2
20	23	12	6	2	7/8		1 1/2
24	27 1/4	12	6	2	7/8		2
30							2
36							2 1/2
42							2 1/2
48							2 1/2

Dimensions are in inches.

Sizes not shown may be available upon request.