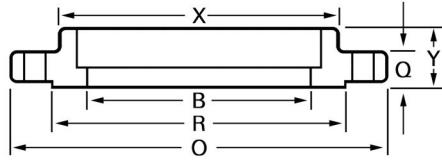


ANSI Stainless Steel Flanges, Class 150 continued



Socket-Weld

Nominal Pipe Size	O	Q	R	X	Bolt Holes	Bolt Circle	B	Y	Weight	304L R/F Part Number	304L F/F Part Number	316L R/F Part Number	316LF/F Part Number
1/2	3 1/2	7/16	1 3/8	1 3/16	4 - 5/8	2 3/8	*	5/8	1	407464		460399	489717
3/4	3 7/8	1/2	1 11/16	1 1/2	4 - 5/8	2 3/4	*	5/8	2	420292	503765	408915	489733
1	4 1/4	9/16	2	1 15/16	4 - 5/8	3 1/8	*	11/16	2	272966	493546	437299	489709
1 1/4	4 5/8	5/8	2 1/2	2 5/16	4 - 5/8	3 1/2	*	13/16	3	489351		460404	489759
1 1/2	5	11/16	2 7/8	2 9/16	4 - 5/8	3 7/8	*	7/8	3	407456		417100	489741
2	6	3/4	3 5/8	3 1/16	4 - 3/4	4 3/4	*	1	5	417663		428876	489725
2 1/2	7	7/8	4 1/8	3 9/16	4 - 3/4	5 1/2	*	1 1/8	7	489369	489848		
3	7 1/2	15/16	5	4 1/4	4 - 3/4	6	*	1 3/16	8	489872	489856	503375	
4	9	15/16	6 3/16	5 5/16	8 - 3/4	7 1/2	*	1 5/16	13	489880			
6	11	1	8 1/2	7 9/16	8 - 7/8	9 1/2	*	1 9/16	19	489995			
8	13 1/2	1 1/8	10 5/8	9 11/16	8 - 7/8	11 3/4	*	1 3/4	30	489987	489864		
10	16	1 1/8	12 3/4	12	12 - 1	14 1/4	*	1 15/16	43				
12	19	1 1/4	15	14 3/8	12 - 1	17	*	2 3/16	64				
14	21	1 3/8	16 1/4	15 3/4	12 - 1 1/8	18 3/4	*	2 1/4	90				
16	23 1/2	1 7/16	18 1/2	18	16 - 1 1/8	21 1/4	*	2 1/2	98				
18	25	1 9/16	21	19 7/8	16 - 1 1/4	22 3/4	*	2 11/16	130				
20	27 1/2	1 11/16	23	22	20 - 1 1/4	25	*	2 7/8	165				
24	32	1 7/8	27 1/4	26 1/8	20 - 1 3/8	29 1/2	*	3 1/4	220				

* To be specified by purchaser
 Dimensions are in inches. All weights are approximate.
 Sizes not shown may be available upon request.