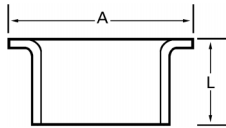


SK-3 and SK-3-P Stainless Steel Flared Stub Ends



- A flared type stub end used for butt welding to pipe, tube and fittings. Often referred to as a “Type C” stub end.
- Available in all stainless steel and most other weldable corrosion resistant alloys (aluminum alloys not included).
- Supplied in wall thicknesses to match the pipe or tubing thickness.
- Available in MSS, Alaskan Standard, and special lengths.
- Alaskan SK-3 stub ends are normally used with Alaskan SK-39 steel backing flanges. Alaskan SK-3-P stub ends

SK-3

Made to Fit OD Tube Size Diameters

Tube OD	3/4	1	1 1/4	1 1/2	2	2 1/2	3	4	5	6	8	10	12	14	16	18	20	24
A (Lap Dia.)	1 3/8	1 3/4	2 1/8	2 1/2	3 1/4	3 3/4	4 3/8	5 1/2	6 11/16	7 3/4	9 3/4	11 3/4	14 1/8	16 1/4	18 1/2	21	23	27 1/4
L (Alaskan Std.)	1 3/8	2	1 7/8	1 3/4	2	2	2 1/8	2 3/8	2 3/8	2 3/8	2	2 1/2	2	3	3	3	3	5

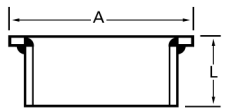
SK-3-P

Made to Fit Nominal Pipe Size Diameters

Nominal																			
Pipe Size	3/4	1	1 1/4	1 1/2	2	2 1/2	3	4	5	6	8	10	12	14	16	18	20	24	
Pipe OD	1.05	1.31	1.66	1.90	2 3/8	2 7/8	3 1/2	4 1/2	5 9/16	6 5/8	8 5/8	10 3/4	12 3/4	14	16	18	20	24	
A (Lap Dia.)	1 11/16	2	2 1/2	2 7/8	3 5/8	4 1/8	5	6 3/16	7 5/16	8 1/2	10 5/8	12 3/4	15	16 1/4	18 1/2	21	23	27 1/4	
L (Alaskan Std.)	2	2	2	2	2 1/2	2 1/2	2 1/2	3	3	3 1/2	4	5	6	6	6	6	6	6	

Dimensions are in inches.

SK-5 and SK-5-P Stainless Steel Fabricated Stub Ends



- A fabricated type stub end designed for use when non-standard diameters, special wall thicknesses or alloy types do not permit flaring.
- Available in MSS, Alaskan Standard and special lengths.
- Alaskan SK-5 stub ends are normally used with Alaskan SK-39 steel backing flanges. Alaskan SK-5-P stub ends are normally used with Alaskan SK-39-P steel backing flanges.