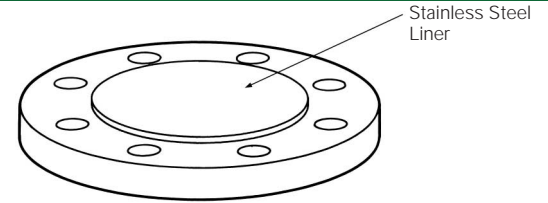
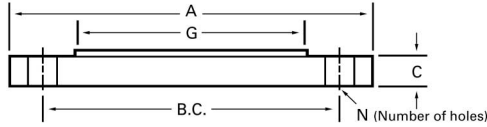


Blind Flanges

SK-84 Carbon Steel Flanges, Stainless Steel Clad



- The most economical blind flange configuration with a stainless steel wetted surface.
- Flange is made from carbon steel plate per ASTM A 36 and then clad with a 16 GA. (.060) 316L ASTM A 240 stainless steel liner, with the liner diameter as shown.
- Drilled hole patterns per ANSI B16.1, Class 125 or Class 250 (identical to ANSI B16.5, Class 150 or Class 300 through 24" size).
- Coated with red oxide primer. Galvanized, epoxy and other coatings are also available.
- Can be manufactured in non-standard sizes, drill patterns and thicknesses.

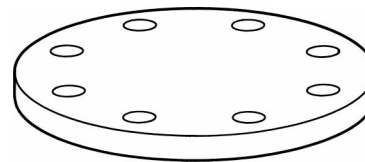
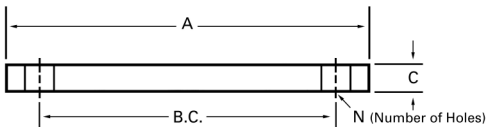
Drilling per Class 125

Nominal																		
Pipe Size	2	2 1/2	3	4	5	6	8	10	12	14	16	18	20	24	30	36	42	48
A (OD)	6	7	7 1/2	9	10	11	13 1/2	16	19	21	23 1/2	25	27 1/2	32	38 3/4	46	53	59 1/2
C (THK)	1/2	1/2	1/2	1/2	1/2	5/8	5/8	5/8	3/4	3/4	3/4	3/4	3/4	3/4	1	1	1 1/8	1 1/4
G	3 5/8	4 1/8	5	6 3/16	7 5/16	8 1/2	10 5/8	12 3/4	15	16 1/4	18 1/2	21	23	27 1/4	33 3/4	40 1/4	47	53 1/2
B.C.	4 3/4	5 1/2	6	7 1/2	8 1/2	9 1/2	11 3/4	14 1/4	17	18 3/4	21 1/4	22 3/4	25	29 1/2	36	42 3/4	49 1/2	56
Hole Size	3/4	3/4	3/4	3/4	7/8	7/8	7/8	1	1	1 1/8	1 1/8	1 1/4	1 1/4	1 3/8	1 3/8	1 5/8	1 5/8	1 5/8
N	4	4	4	8	8	8	8	12	12	12	16	16	20	20	28	32	36	44
Weights	3.9	5.4	6.4	9.1	10.7	17.0	26.1	36.3	61.5	75.5	93.7	107	130	175	339	476	712	994

Drilling per Class 250

Nominal																		
Pipe Size	2	2 1/2	3	4	5	6	8	10	12	14	16	18	20	24	30	36	42	48
A (OD)	6 1/2	7 1/2	8 1/4	10	11	12 1/2	15	17 1/2	20 1/2	23	25 1/2	28	30 1/2	36	43	50	57	65
C (THK)	5/8	5/8	5/8	3/4	3/4	7/8	7/8	7/8	1	1	1	1	1	1 1/8	1 1/4	1 1/4	1 3/8	1 1/2
G	3 5/8	4 1/8	5	6 3/16	7 5/16	8 1/2	10 5/8	12 3/4	15	16 1/4	18 1/2	21	23	27 1/4	37 3/16	43 11/16	50 7/16	58 7/16
B.C.	5	5 7/8	6 5/8	7 7/8	9 1/4	10 5/8	13	15 1/4	17 3/4	20 1/4	22 1/2	24 3/4	27	32	39 1/4	46	52 3/4	60 3/4
Hole Size	3/4	7/8	7/8	7/8	7/8	7/8	1	1 1/8	1 1/4	1 1/4	1 3/8	1 3/8	1 3/8	1 5/8	1 7/8	2 1/8	2 1/8	2 1/8
N	8	8	8	8	8	12	12	16	16	20	20	24	24	24	28	32	36	40
Weights	5.4	7.2	9.0	16.2	20.0	29.7	43.1	58.5	92.0	115	142	171	205	319	507	683	982	1399

SK-85 Cast Stainless Steel Blind Flanges



- An economical light-weight all stainless steel blind flange for use when a stainless clad steel blind flange is not permitted.
- Available in ACI grade CF-3M (316L) and (317L). All surfaces are fully machined.
- Drilled hole patterns per ANSI B16.1, Class 125 (identical to ANSI B16.5, Class 150 through 24" size).

Nominal																
Pipe Size	2	2 1/2	3	4	5	6	8	10	12	14	16	18	20	24	30	36
A (OD)	6	7	7 1/2	9	10	11	13 1/2	16	19	21	23 1/2	25	27 1/2	32	38 3/4	46
C (THK)	3/8	3/8	1/2	1/2	1/2	1/2	5/8	5/8	5/8	3/4	3/4	3/4	3/4	3/4	1	1
B.C.	4 3/4	5 1/2	6	7 1/2	8 1/2	9 1/2	11 3/4	14 1/4	17	18 3/4	21 1/4	22 3/4	25	29 1/2	36	42 3/4
Hole Size	3/4	3/4	3/4	3/4	7/8	7/8	7/8	1	1	1 1/8	1 1/8	1 1/4	1 1/4	1 3/8	1 3/8	1 5/8
N	4	4	4	8	8	8	8	12	12	12	16	16	20	20	28	32
Weights	2.9	4.0	6.1	8.7	10.7	13.1	25.1	34.7	49.7	72.7	90.9	102	124	168	330	463

Dimensions are in inches. Weights are in pounds.