

Stainless Steel Sheet, Plate & Coil

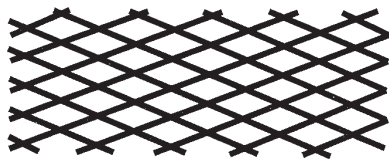
Special Stainless Steel Plate Types

T-304 Stainless Steel HRAP Raised Diamond Flat Back Tread Plate

Thickness	Size	Lbs/ Sq Ft	Lbs/Sheet	Part Number
1/8	48 X 120	6.150	246.000	406125
1/8	60 x 120	6.150	307.500	788608
3/16	48 X 120	8.700	348.000	406141
3/16	48 X 144	8.700	417.600	406159
3/16	60 x 120	8.700	435.000	683515
1/4	48 X 120	11.250	450.000	406167
1/4	48 X 144	11.250	540.000	406175
1/4	60 x 120	11.250	562.500	630546
3/8	48 X 120	16.370	654.800	466345

Note: Widths may be mill edge. Lengths may be random.

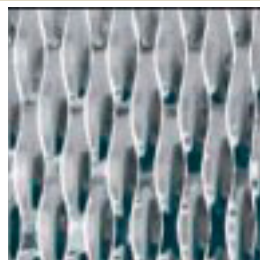
T-304 Stainless Steel Flattened and Expanded Sheet



Thickness	Size	Lbs/ Sq Ft	Lbs/Sheet	Part Number
1/2 - #18	48 X 96	.690	22.080	108036
1/2 - #13	48 X 96	1.780	56.960	477029
3/4 - #18	48 X 96	.460	14.720	107959
3/4 - #16	48 X 96	.570	18.240	107975
3/4 - #13	48 X 96	.860	27.520	233174
3/4 - #9	48 X 96	1.950	62.400	233140
1 1/2 - #9	48 x 96	1.370	43.840	741402
1 1/2 - #13	48 X 96	.680	21.760	604252



Oxford Pattern



5-SM Pattern



6-OM Pattern

T-304 Stainless Steel Textured Sheet

Thickness	Size	Lbs/ Sq Ft	Lbs/Sheet	Textured Pattern	Part Number
20 (.036)	48 X 120	1.50	60.000	5-SM	704939
16 (.060)	48 X 120	2.52	100.800	6-OM	704913
16 (.060)	48 X 96	2.52	80.640	6-OM	699045
14 (.075)	48 X 120	3.15	126.000	6-OM	704921

Dimensions are in inches. All weights are approximate.
Sizes not shown may be available upon request.