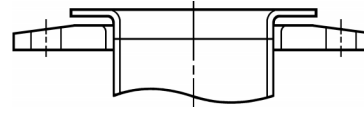
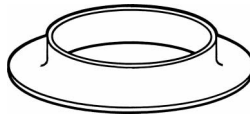
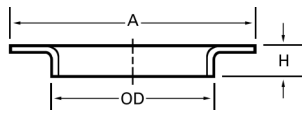
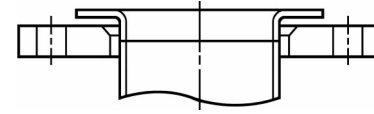


# Stainless Steel Butt Welding Stub Ends

## SK-2 and SK-2-P Short Flared Stainless Steel Stub Ends



As shown with Alaskan SK-39  
or SK-39-P backing flange



As shown with Alaskan SK-70  
or SK-70-P backing flange

- A short length, flared type stub end normally used for butt welding to "as welded" pipe, tube and fittings.
- Provides an inexpensive means of "Van Stone" flanging when butt welding is required.
- Available in all stainless steel and most other weldable corrosion resistant alloys (aluminum alloys not included).
- Available in 12 Ga. (.105), 10 Ga. (.134) and  $\frac{3}{16}$ " thicknesses.
- Alaskan SK-2 stub ends are normally used with Alaskan SK-39 steel backing flanges. Alaskan SK-2-P stub ends are normally used with Alaskan SK-39-P steel backing flanges.

### SK-2

Made to Fit OD Tube Size Diameters

Tube OD	1 1/2	2	2 1/2	3	4	5	6	8	10	12	14	16	18	20	24
H (Length)	5/8	5/8	3/4	3/4	3/4	3/4	3/4	3/4	7/8	7/8	7/8	7/8	7/8	7/8	7/8
A (Lap Dia.)	2 1/2	3 1/4	3 3/4	4 3/8	5 1/2	6 11/16	7 3/4	9 3/4	11 3/4	14 1/8	16 1/4	18 1/2	21	23	27 1/4
Weights (10 Ga)	.20	.30	.40	.50	.70	1.0	1.2	1.6	2.3	2.8	3.5	4.1	5.0	5.9	6.7

### SK-2-P

Made to Fit Nominal Pipe Size Diameters

Nominal															
Pipe Size	1 1/2	2	2 1/2	3	4	5	6	8	10	12	14 thru 24 see SK-2				
Pipe OD	1.90	2 3/8	2 7/8	3 1/2	4 1/2	5 9/16	6 5/8	8 5/8	10 3/4	12 3/4					
H (Length)	5/8	5/8	3/4	3/4	3/4	3/4	3/4	3/4	7/8	7/8					
A (Lap Dia.)	2 7/8	3 5/8	4 1/8	5	6 3/16	7 5/16	8 1/2	10 5/8	12 3/4	15					
Weights (10 Ga)	.25	.35	.45	.62	.92	1.1	1.3	1.9	2.6	3.1					

Dimensions are in inches. All weights are in pounds based on a metal density of .29 lb/in<sup>3</sup>