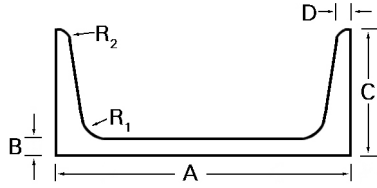


# Aluminum Channel

## 5086-H111 American Standard Channel



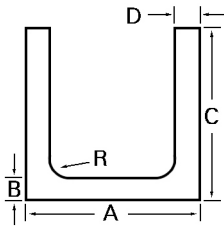
- Specifications: ASTM B 221
- Stocked in 25 foot lengths

Size (A)	Web (B)	Flange (C)	Thickness (D)	Radius (R <sub>1</sub> )	Radius (R <sub>2</sub> )	Lbs Ft	Lbs/Length	Part Number
3	.258	1.498	.170	.270	.100	1.735	34.700	670203
3	.356	1.596	.170	.270	.100	2.070	51.750	801430
4	.180	1.580	.180	.280	.110	1.846	46.250	671615
5	.190	1.750	.190	.290	.110	2.316	57.900	658659
6	.200	1.9375	.200	.300	.120	2.830	70.750	739691
6	.438	2.157	.200	.300	.120	4.480	112.000	801448
10*	.240	2.600	.240	.340	.140	5.280	105.600	753425
12	.300	2.960	.280	.380	.170	7.360	181.500	688971

\*Stocked in 20 ft lengths

Dimensions are in inches. All weights are approximate.

## 5086-H111 Aluminum Association Channel



- Specifications: ASTM B 221
- Stocked in 25 foot lengths

Size (A)	Web (B)	Flange (C)	Thickness (D)	Radius (R)	Lbs Ft	Lbs/Length	Part Number
2	.130	1.000	.130	.100	0.577	14.225	659760
2	.188	1.500	.188	.188	1.032	20.640	751944
3	.250	2.000	.188	.188	2.240	56.000	669626
4	.190	1.750	.290	.250	2.331	46.000	719900
6*	.170	2.500	.290	.300	2.834	70.320	719918
7	.170	2.750	.290	.300	3.210	80.500	716960
7	.210	3.500	.380	.310	4.715	117.875	717356
8	.190	3.000	.350	.300	4.147	103.675	716952

\*Stocked in 20 ft lengths

Dimensions are in inches. All weights are approximate.