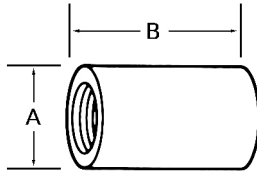


Aluminum Pipe Fittings

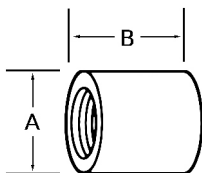
6061-T6 Fittings

- An assortment of threaded, socket welding and buttweld fittings are available upon request. Please inquire.



Threaded Full Couplings

Nominal Pipe Size	Sch 40 A	Sch 80 A	Sch 40 B	Sch 80 B	Sch 40 Lbs/Ea	Sch 80 Lbs/Ea	Sch 40 Part Number	Sch 80 Part Number
$\frac{1}{8}$	$\frac{19}{32}$	$\frac{7}{8}$	$\frac{15}{16}$	$1 \frac{1}{8}$	0.020		253441	
$\frac{1}{4}$	$\frac{3}{4}$	1	$1 \frac{1}{32}$	$1 \frac{3}{8}$	0.025		171314	
$\frac{3}{8}$	$\frac{29}{32}$	$1 \frac{1}{4}$	$1 \frac{5}{32}$	$1 \frac{1}{2}$	0.035		171330	
$\frac{1}{2}$	$1 \frac{1}{16}$	$1 \frac{1}{2}$	$1 \frac{5}{16}$	$1 \frac{7}{8}$	0.060	0.250	171356	402511
$\frac{3}{4}$	$1 \frac{11}{32}$	$1 \frac{7}{8}$	$1 \frac{9}{16}$	$2 \frac{1}{8}$	0.100	0.410	171372	402529
1	$1 \frac{5}{8}$	2	$1 \frac{13}{16}$	$2 \frac{3}{8}$	0.135	0.480	171398	402537
$1 \frac{1}{4}$	$1 \frac{31}{32}$	$2 \frac{1}{2}$	$2 \frac{1}{16}$	$2 \frac{7}{8}$	0.230	0.880	171411	512552
$1 \frac{1}{2}$	$2 \frac{15}{64}$	$2 \frac{3}{4}$	$2 \frac{5}{16}$	$2 \frac{7}{8}$	0.310	0.970	171437	405585
2	$2 \frac{23}{32}$	$3 \frac{1}{4}$	$2 \frac{9}{16}$	$3 \frac{5}{8}$	0.500	1.530	171453	405593
$2 \frac{1}{2}$	$3 \frac{5}{16}$	$3 \frac{3}{4}$	$2 \frac{7}{8}$	$4 \frac{1}{8}$	0.730	2.110	171518	512560
3	$3 \frac{15}{16}$	$4 \frac{1}{2}$	$3 \frac{1}{16}$	$4 \frac{1}{4}$	1.015	2.030	171479	408892
4	$4 \frac{15}{16}$	$5 \frac{1}{2}$	$3 \frac{7}{16}$	$5 \frac{5}{8}$	2.040		171495	



Threaded Half Couplings

Nominal Pipe Size	A	B	Lbs/Ea	Sch 40 Part Number
$\frac{1}{8}$	$\frac{19}{32}$	$\frac{15}{16}$.013	460593
$\frac{1}{4}$	$\frac{3}{4}$	$1 \frac{1}{32}$.013	241224
$\frac{3}{4}$	$1 \frac{11}{32}$	$1 \frac{9}{16}$.050	241193
1	$1 \frac{5}{8}$	$1 \frac{13}{16}$.068	241185
$1 \frac{1}{4}$	$1 \frac{31}{32}$	$2 \frac{1}{16}$.115	266397
$1 \frac{1}{2}$	$2 \frac{15}{64}$	$2 \frac{5}{16}$.125	561690
2	$2 \frac{23}{32}$	$2 \frac{9}{16}$.230	502701